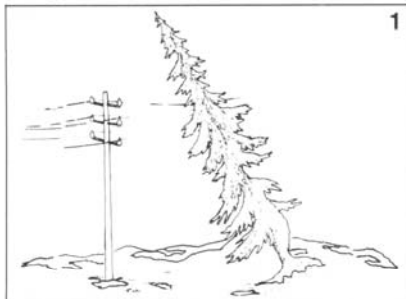
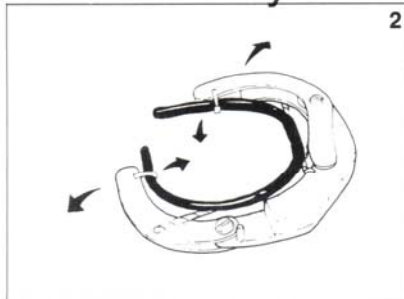


SAFE-T-CUT®

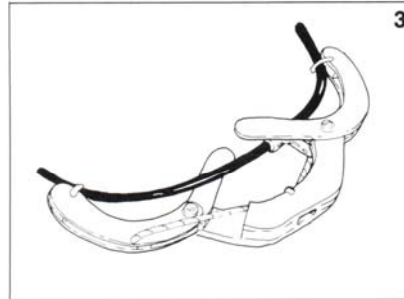
How to use the SAFE-T-CUT system.



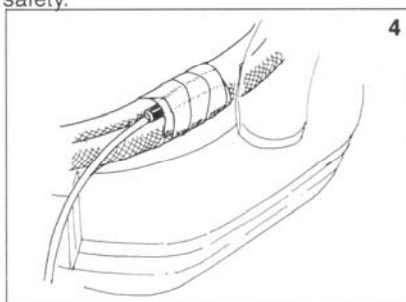
1 Check the working area. Are there dangerous trees that threaten your safety.



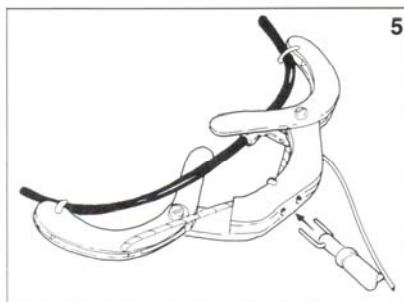
2 Open and close the clamp to ensure its function.



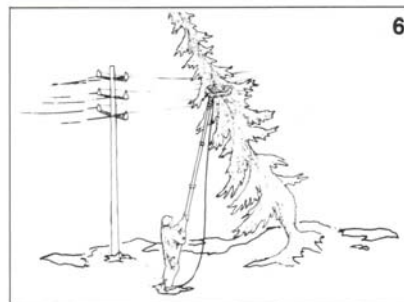
3 Open the clamp completely.



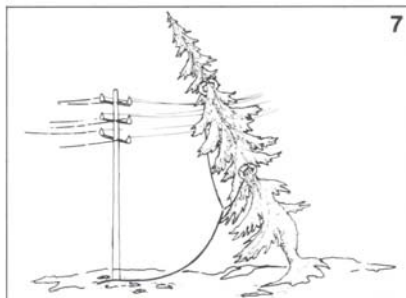
4 Insert the blasting cap into the holder.



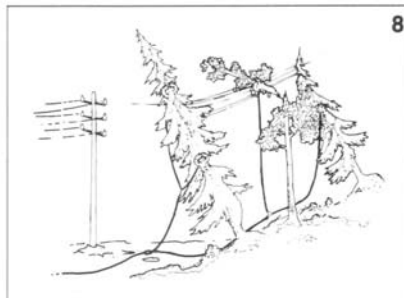
5 Attach the clamp to the fibreglass rod.



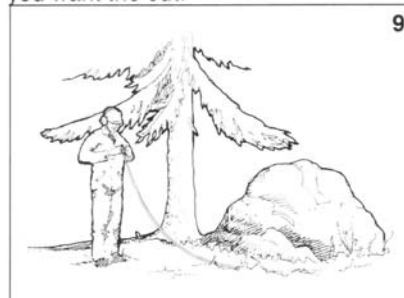
6 Using the fibreglass rod, attach the clamp to the place on the tree where you want the cut.



7 In some cases it can be an advantage to cut the tree on two places.



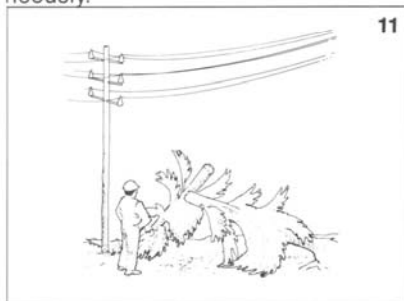
8 If there are many fallen trees in the same area, you can cut them simultaneously.



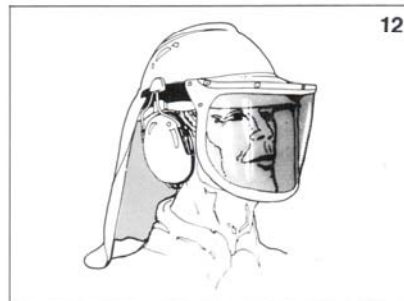
9 Choose a safe place from where ignition can be done.



10 When you have taken the necessary precautions for blasting; be sure that the dangerous zone is clear and guarded.

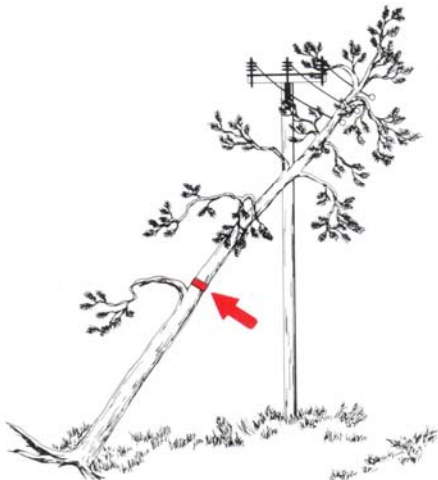


11 Check the working area after blasting.



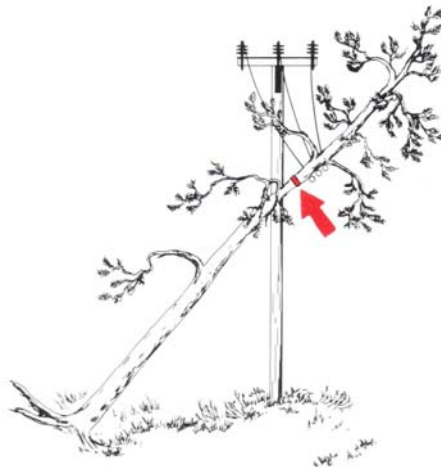
12 Always use hard-hat with eye and ear protection when working with the SAFE-T-CUT system.

Different types of fallen trees.



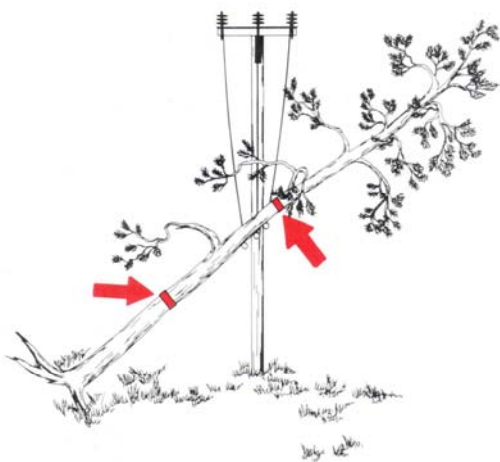
A tree with a small overhang.

Cut the tree so far down that the thicker end of the top swivels down and in under the power lines. The tension of the lines will help slinging the top away.



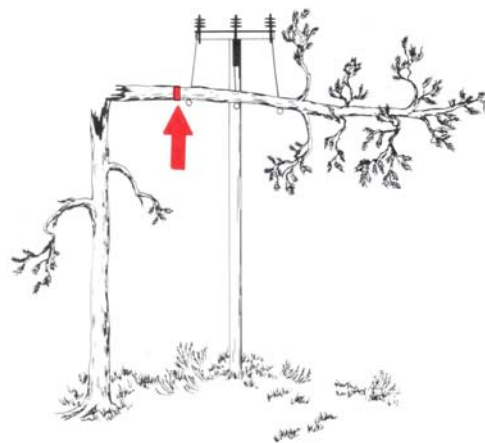
A tree with a large overhang.

By cutting the tree on the rootside, near the outer phase, the weight of the top will swing this over the phases. The tension of the lines will help slinging the top away.



A tree with such a large overhang that the top might reach the ground or other trees when blasting.

Use two clamps. One is attached just above the outer phase. The other so far down that there is enough weight on the thicker end of the middle part. The tension of the lines will help slinging the top away.



A broken tree with a large overhang.

By cutting the tree on the rootside near the outer phase, the weight of the top will swing the tree over the phases. The tension of the lines will help slinging the top away.